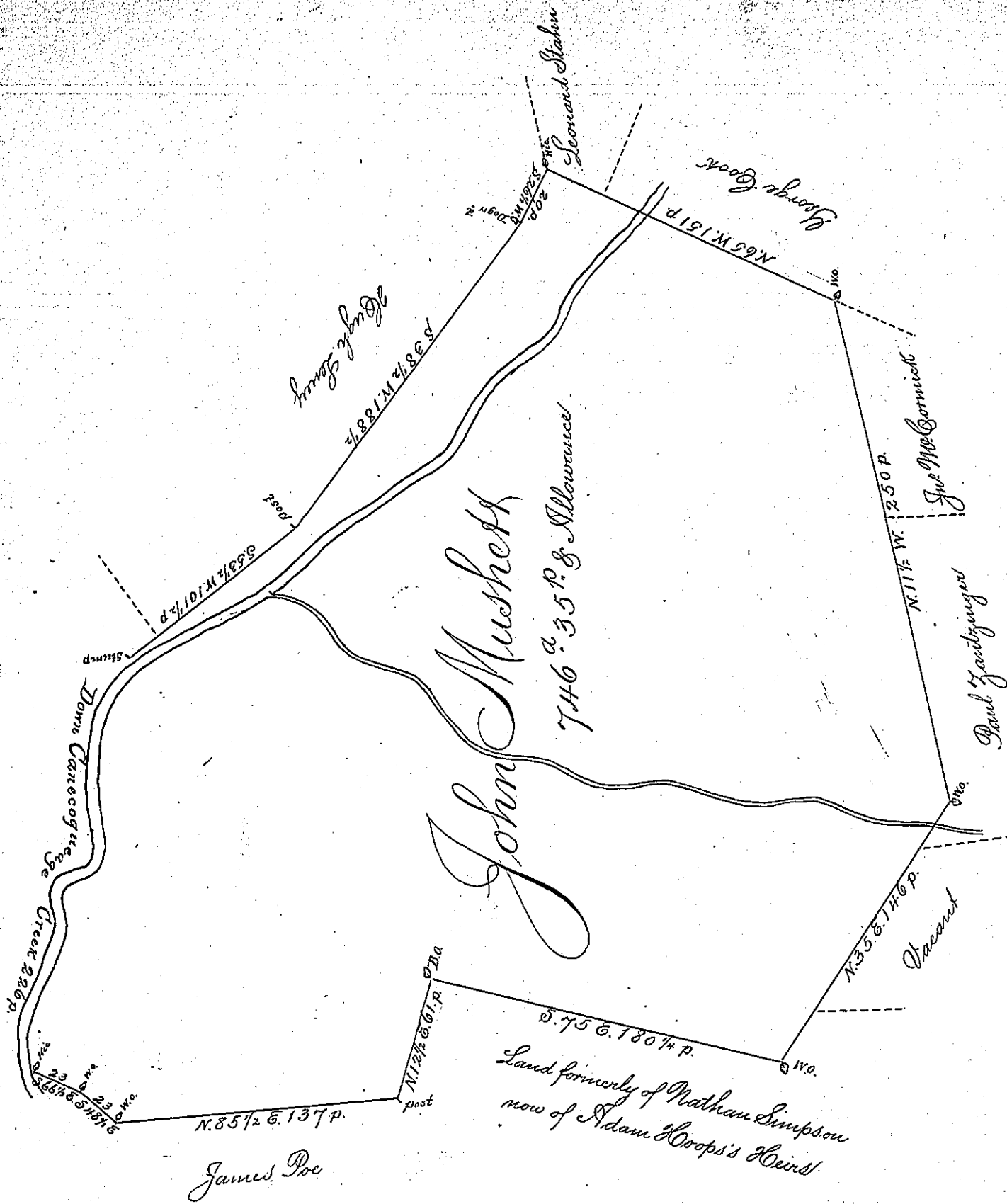


Courted on the Creek  
 S 42 E 8<sup>p</sup> crossing do  
 S 48 W 18  
 S 22 W 12  
 S 15 W 19  
 S 3 E 17  
 S 11 E 12½  
 S 26 E 6½  
 S 6 W 16  
 S 33 W 8  
 S 81 W 16  
 S 43 W 7  
 S 17 E 14  
 S 21 W 47  
 S 9 W 13  
 S 24 E 12  
 226p



A Draft of a Tract of Land situate in Guilford Township in the County of Franklin (formerly  
 in the County of Lancaster) containing Seven Hundred and forty six Acres and thirty five Perches and  
 the Allowance of Six p. Cent for Roads &c. Resurveyed April 29<sup>th</sup> 1793 in pursuance of a Warrant  
 granted to John Musheret bearing Date the tenth Day of August 1745.

Matthew Henderson, D.S.

To Daniel Brodhead Esquire  
 Surveyor General of Pennsylvania

IN TESTIMONY that the above is a copy of the original remaining on file in the Department of  
 Internal Affairs of Pennsylvania, made conformably to an Act of Assembly  
 approved the 16th day of February, 1833, I have hereunto set my Hand  
 and caused the Seal of said Department to be affixed at Harrisburg, this  
 fifth day of May 1893.

[Signature]  
 Secretary of Internal Affairs.